

**From the City of Lompoc Web Site  
Created and Maintained by City of Lompoc Information Services  
Division**

A very special thanks to the Lompoc Valley Historical Society and all the good folks for sharing their photo archives with us.

<http://www.ci.lompoc.ca.us/>

## **Honda Point Shipwreck Photos**

On September 8, 1923, 14 Navy Destroyers left San Francisco headed for San Diego. The captain of the flagship *Delphy* was ordered to maintain 20 knots in close formation and radio silence the entire trip. At 9:00 p.m. Capt. Watson gave the order to change course to head into the Santa Barbara Channel. Four minutes after they made the turn the *Delphy* smashed into the rocky shoreline of Honda Point. Six other ships followed right into the shoreline. Twenty-three men lost their life, twenty from the *Young* that rolled over in 90 seconds.



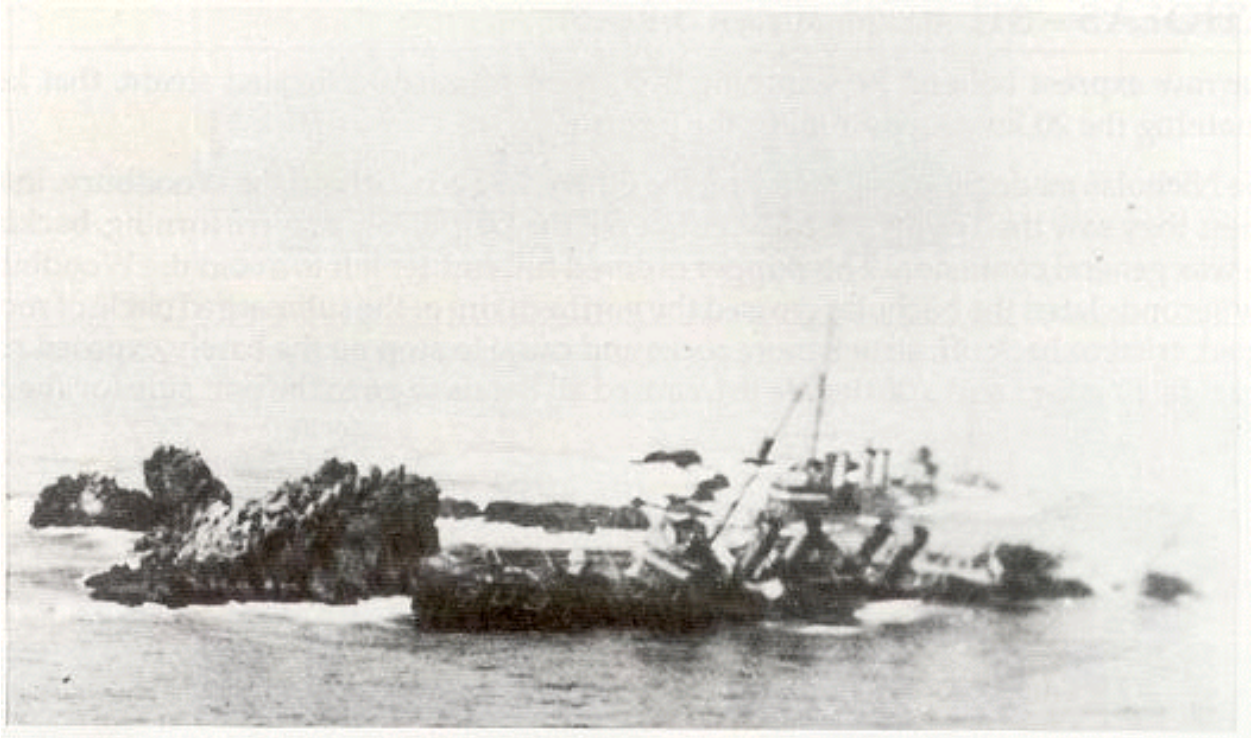
In this picture you can see the rear of the *Chauncey* (behind rocks), the *Young* capsized and the *Woodbury* in front of the *Fuller*.



In this picture you can see the Delphy on its left side, the Young capsized and the Woodbury stranded in the rocks.



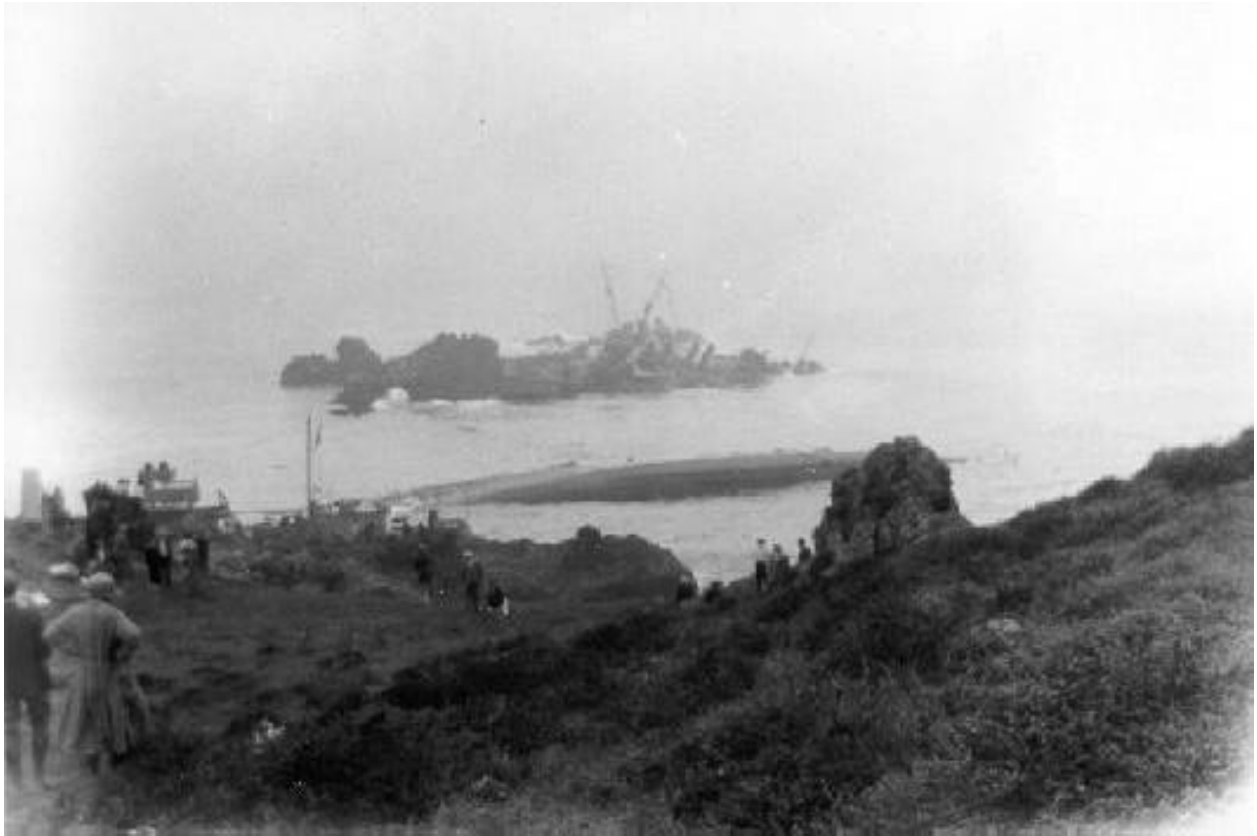
In this picture you can see the S.P. Lee and the Nicholas behind it.



In this picture you can see the Woodbury and the Fuller. They ran aground 500 yards off shore



Another view of the SP Lee and the Nicholas.



The Chauncey (behind rocks), the Young capsized and the Woodbury in front the Fuller with Lompoc residents in the foreground.



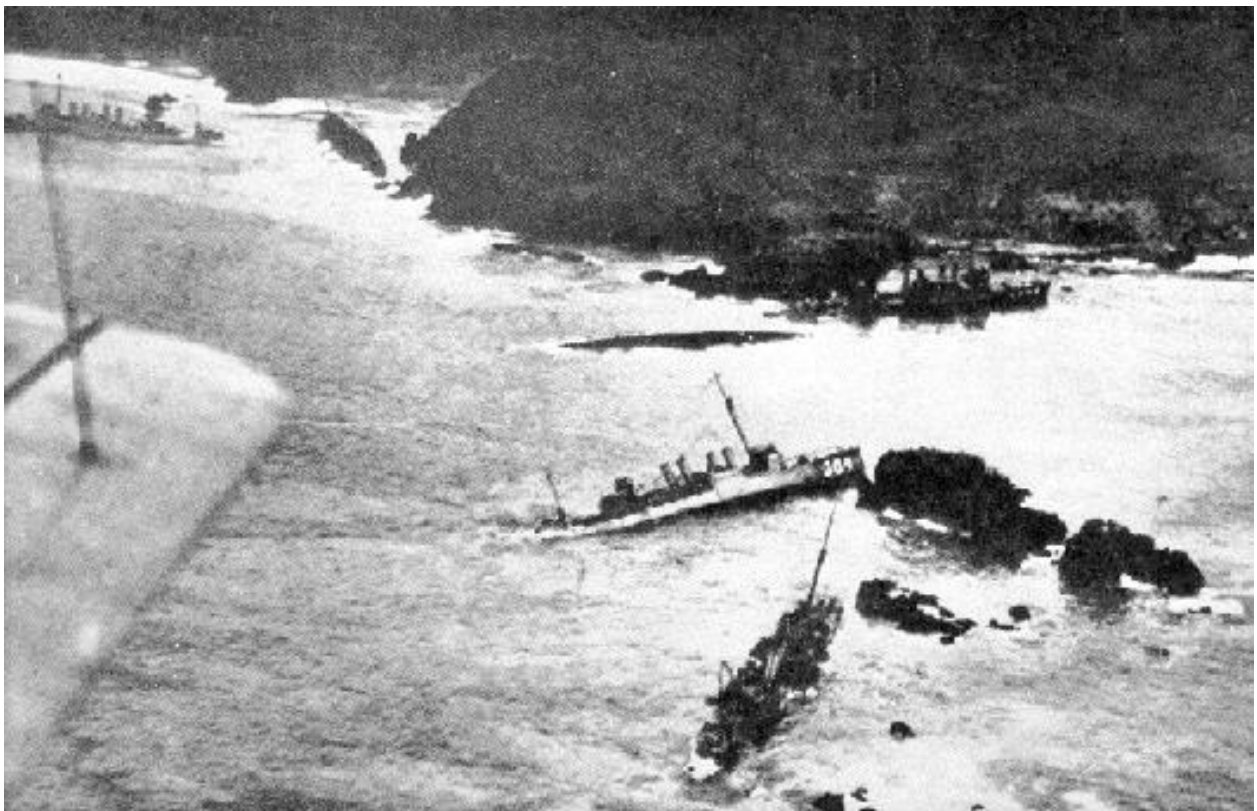
An up close view of the Chauncey.



Arthur Peterson was on the Young and swam 100 yards to the Chauncey with a rope to save the men on the young.



In this picture you can see the Delphy on its left side, the flagship.



An aerial shot of where all the ships ran aground.