



# **CUP 19-01**

# **CLH Retail Solutions**

Planning Commission Meeting  
April 10, 2019

# Project Location

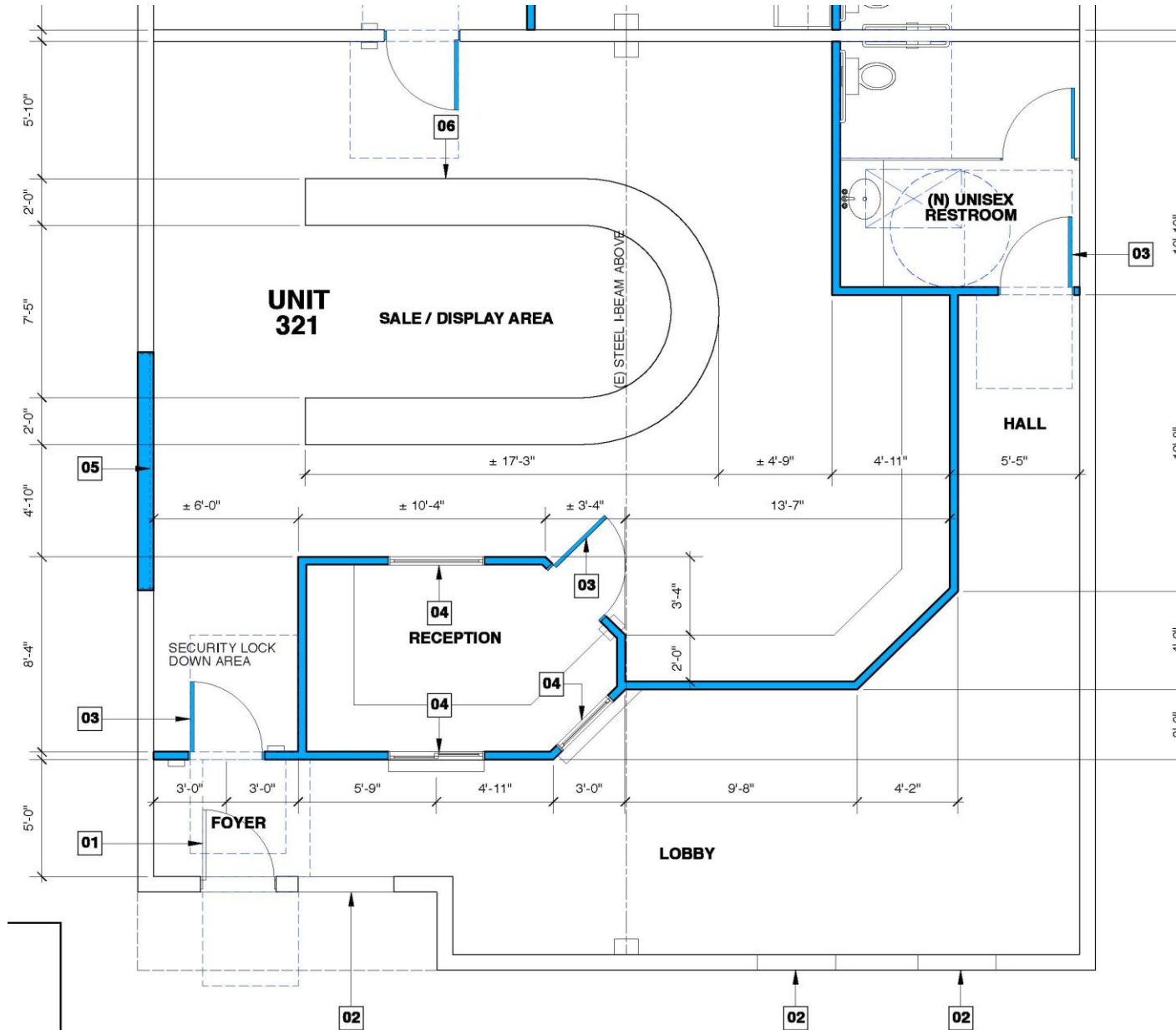




# Parking Summary

Address / Unit	Business	Business Type	Floor Area (s.f.)	Required Parking
Unit 313	CLH (Distribution)	Distribution	2,720	5.4
Unit 315	CLH (Manufacturing)	Manufacturing – Heavy	3,145	3.0
Unit 317	Genius Extractions (Manufacturing)	Manufacturing – Heavy	2,720	5.4
Unit 319	CLH (Warehouse)	Warehouse, Indoor Storage	1,696	1.1
Unit 321	CLH (Dispensary)	Retail	1,449	5.8
Total Number of Proposed Parking Spaces:				19
Total Number of Parking Spaces Required:				21
Proposed Parking Deficiency:				10%

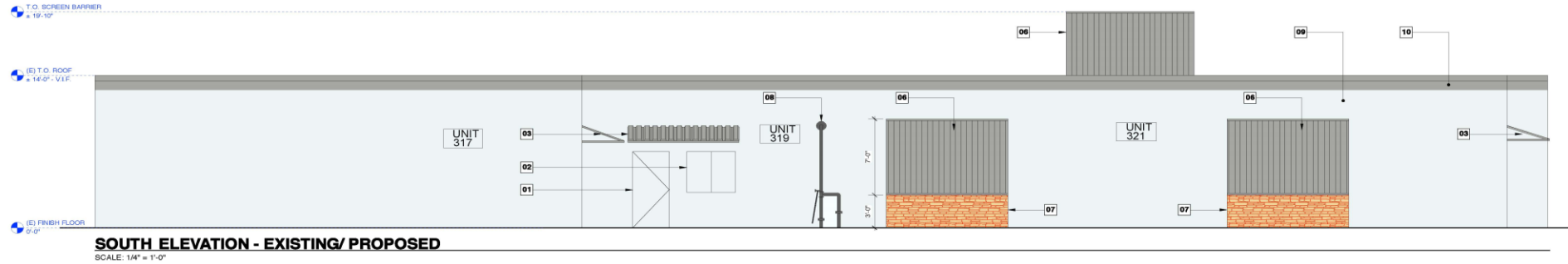
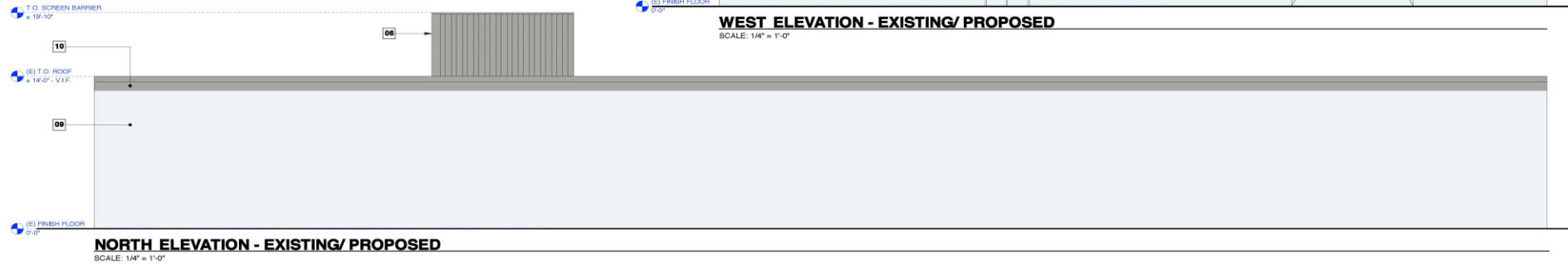
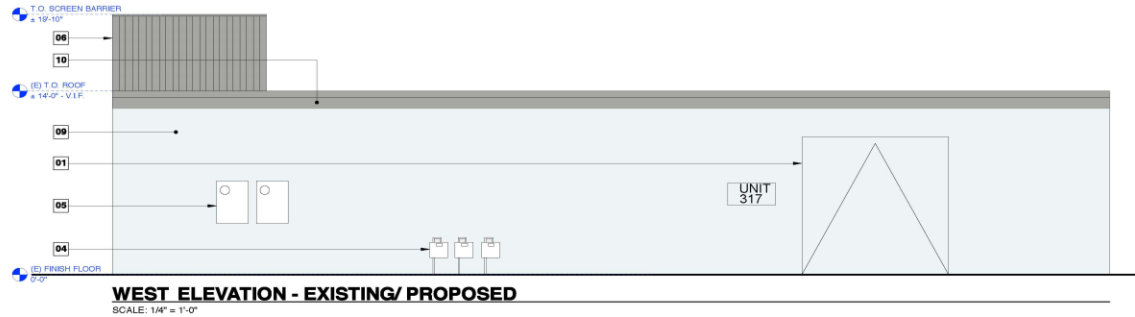
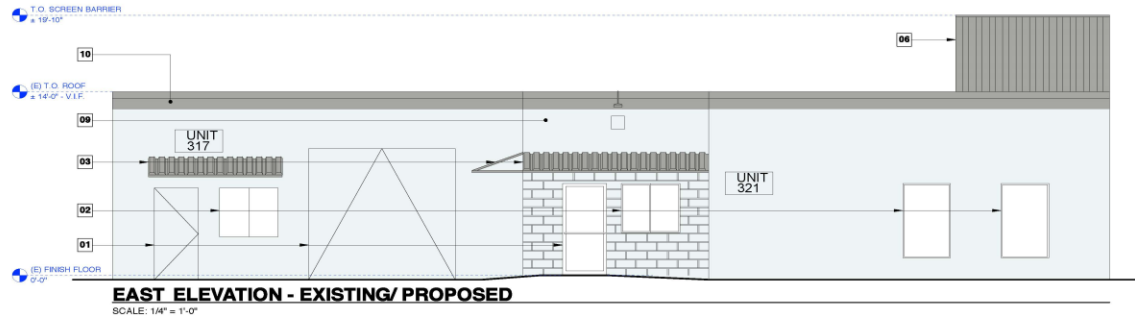
# Proposed Floor Plan



# Proposed Elevations

## ELEVATION REFERENCE NOTES:

- 01 (E) DOOR TO REMAIN
- 02 (E) WINDOW TO REMAIN
- 03 (E) STEEL HINGING ROOF ABOVE DOORS TO REMAIN  
COLOR: SHERWIN WILLIAMS SW7067 CITYSCAPE
- 04 (E) GAS METERS(S) TO REMAIN
- 05 (E) ELECTRICAL METERS/CONNECTS TO REMAIN
- 06 (E) POWER COATED GALVANIZED STEEL COLOR TO MATCH (E) TRIM COLOR  
COLOR: SHERWIN WILLIAMS SW7067 CITYSCAPE
- 07 (E) STONE SHERWIN FINISH  
COLOR: SANDSTONE
- 08 (E) FIRE EQUIPMENT TO REMAIN
- 09 (E) CSU WALL FINISH  
COLOR: SHERWIN WILLIAMS SW6232 MISTY
- 10 (E) FAUXBET WALL  
COLOR: SHERWIN WILLIAMS SW7067 CITYSCAPE



# Planning Commission Action

- Adopt Resolution No. 903 (19) approving Conditional Use Permit CUP 19-01

OR

- Provide other direction