



River Bend Bike Park

City Staff working with the Committee on this project:

Teresa Gallavan, Economic Dev. Director/Asst City Administrator

Brad Wilkie, Management Services Director

Joe Pannone, City Attorney

Kevin McCune, Public Works Director

Lucille Breese, Planning Manager

Cindy McCall, Parks & Urban Forestry Manager

Mario Guerrero, Jr., Recreation Manager

Background

◆ June 13, 2012*

- Conceptual Approval from the Lompoc Parks & Recreation Commission

◆ August 7, 2012

- Conceptual Approval from the Lompoc City Council & Direction to staff to work with the Committee to Develop the MOU

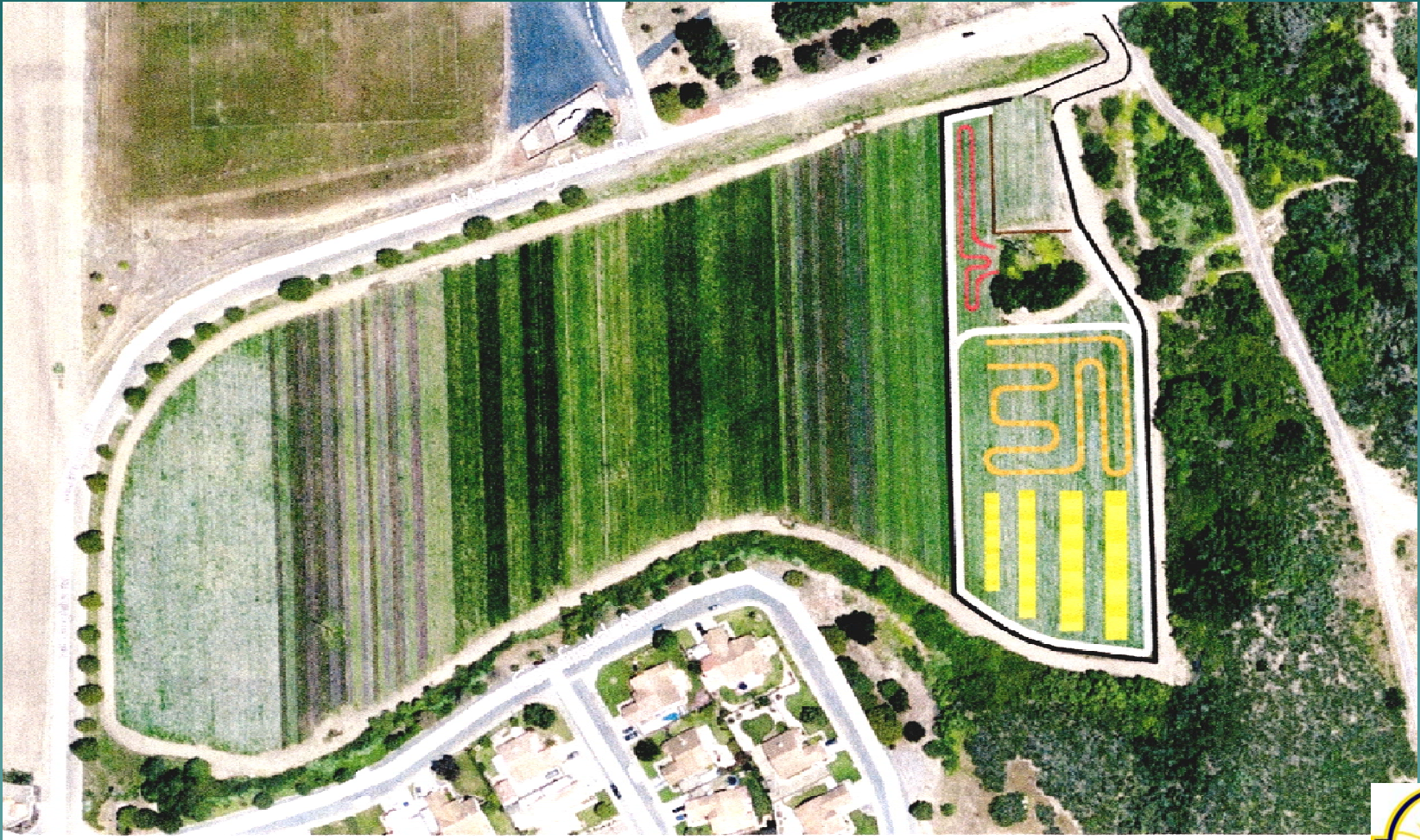
◆ January 9, 2013*

- Project update to the Parks & Recreation Commission

*Property owners were noticed for these two meetings



Initial Proposed Layout



Key Components of the MOU for Construction of the Facility

- ◆ Design Professional
- ◆ Construction Oversight
- ◆ Indemnification and Insurance
- ◆ Volunteers



Key Components of the Park Management Plan (Volunteer Policy)

- ◆ Head Volunteer
- ◆ Volunteer Phone Hotline
- ◆ Operations Plan
- ◆ Implementation
- ◆ Volunteer Live Scans



Fiscal Impacts

- ◆ Impact Fees – Approximately \$50,000 for infrastructure development
- ◆ City Utilities – Approximately \$1,000 annually
- ◆ City Staff – Approximately 10 hours per week



Recommendations

- ◆ Accept the design and current conceptual maintenance and operational model for the development of River Bend Park; and
- ◆ Approve the MOU for construction of the River Bend Bike Park; and
- ◆ Approve appropriations of \$50,000 in AB 1600 Park Improvement fees for design and installation costs of a waterline and water meter onsite;



Recommendations continued

- ◆ Approve General Fund appropriations in a new subaccount under Parks for operations and oversight of volunteer force.
- ◆ Approve the concept of a Park Management Policy to define long-term maintenance responsibilities. Direct staff to return to Council within 90 days for approval; or
- ◆ Provide staff alternate direction





A large rectangular sign with a white border. The background is dark brown. In the center is a large white silhouette of a person riding a bicycle. Below the silhouette, the text "RIVER BEND BIKE PARK" is written in a large, white, bold, sans-serif font. To the right of this text, "LOMPOC, CA" is written vertically in a smaller white font. On the right side of the sign, there are three smaller dark brown rectangular boxes stacked vertically. Each box contains a white silhouette of a person on a different type of bicycle: a child on a tricycle, a person on a BMX bike, and a person on a mountain bike. Below each silhouette is a white label: "KIDS", "BMX", and "MTB" respectively.





SPECIALIZED



ORTIZ TECHNOLOGY SERVICES



**Angela Brooks,
Realtor**

Barbara Clarke

Nathan Smith



**Family of
Nacho Vejar**



ANY QUESTIONS???



LET'S RIDE!!!