



California State Park Off-highway Motor Vehicle Recreation Grant Program

Motorsports Park @ Airport Project Grant Application

Presented by
Teresa Gallavan, Economic Development Director/
Assistant City Administrator



Motorsports Park @ Airport

LOMPOC VALLEY MOTORSPORTS PARK PROPOSED LAYOUT



- | | |
|----|------------------------|
| 1 | PARKING & PIT AREA |
| 2 | DRAG STRIP |
| 3 | MOTOCROSS TRACK |
| 4 | SKY DIVE SANTA BARBARA |
| 5 | OVAL TRACK |
| 6 | RESTROOMS |
| 7 | TIMING TOWER |
| 8 | 'V' STREET ENTRANCE |
| 9 | NORTH 'H' STREET |
| 10 | 'H' STREET ENTRANCE |
| 11 | GRAND STANDS |





About the Grant Program

Purpose of Grants Program

Grants Cycle

Matching Funds

Eligible Costs



About the Grant Program

Resolution of Approval to Apply for Grant

Preliminary Application

Score Calculation

- * General Criteria
- * Project Specific Criteria



About the Grant Program

Project Performance Period – 3 years

Withdraw / Cancel Anytime

Reimbursements / Advances



Recommendation:

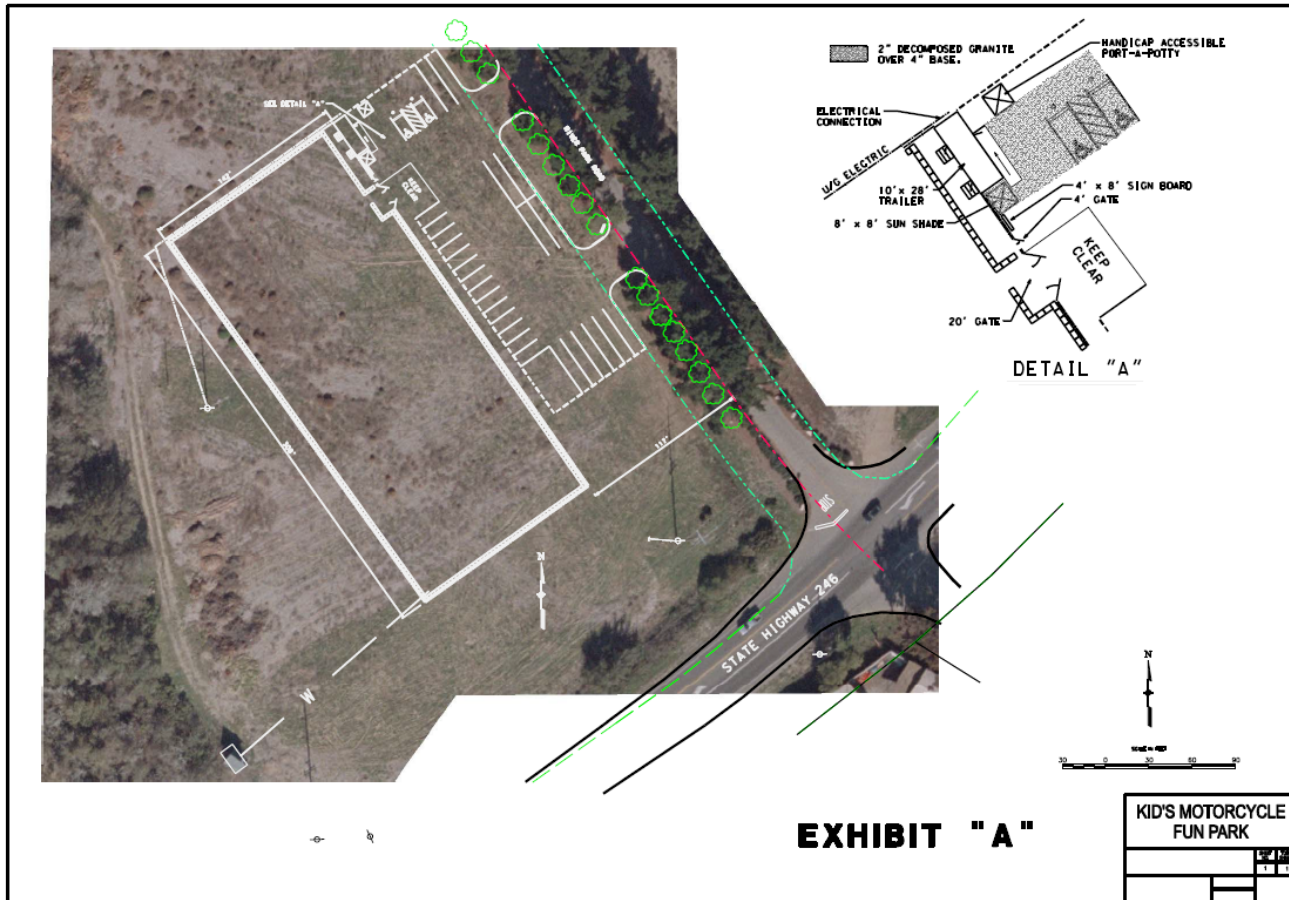
1) Direct Staff to Submit a
Preliminary Grant Request

&

Kids Motorcycle Fun Park
Presented by Kevin McCune,
Public Works Director



Kids Motorcycle Fun Park





GENERAL PARK RULES

- EVERY motorcycle/ATV, entering the park must have a valid green sticker.
- Sign-in before you unloading, DO NOT UNLOAD FIRST
- Inspect your motors and wheels before you ride & PLEASE do repairs on truck or trailer used to haul.
- No do-nuts, wheelies or warming up in people/parking areas.
- Safety gear must be worn correctly. Helmets must be SNELL/DOT approved & fastened on your head. Boots that fasten above the ankle, long sleeves, pants, goggles are a must also. Neck support & roost deflectors are optional.
- Do not move riding area markers, cones, signs or barriers.
- Read and obey all posted signs.
- NO alcohol allowed.
- Rudeness to staff will not be tolerated.
- Do not move a downed rider, keep them calm, protected & report to staff.



KIDS FUN PARK RULES & REGULATIONS

- All riders must wear required protective riding gear at all times-while on their motorcycle, ATV. This includes helmets, goggles, long pants, long sleeve jerseys, gloves and boots. L VMPPC would also like to see every rider wear chest protectors.
- All riders will be required to complete L VMPP Safety Class before riding the course.
- At no time will inappropriate riding be tolerated- NO EXCEPTIONS.
- The rider wrist bands are mandatory to show completion of L VMPP safety class. Wrist bands must be worn at all times while in the park.
- Spectators will be able to watch from stands or side of track in designated spectator areas.
- The only persons allowed in the riding area are one parent of the mini riders.
- Parents are responsible for their child AT ALL TIMES.
- All riders must adhere to the rules, codes and regulations set by California Codes
- Alcohol or drugs will not be tolerated on Park property at any time.
- No cooking permitted anywhere at Kid's Motorcycle Fun Park.
- No Pets allowed except legal working dogs.
- Repeat violations will result in loss of use to ride at Kid's Motorcycle Fun Park



RIDING AREA RULES

- Enter course at marked entrance. Never enter course any other way.
- Do not cut across course to catch a friend or for any reason. First time, ejected, second time banned.
- Never ride backwards on course, ask directions first if you cannot tell the correct direction.
- **NO DOUBLE RIDING**
- Spectators must stay in designated areas
- Report unsafe riders to staff. They will be warned or ejected.
- **NO ADULT RIDERS** allowed in riding area. (You will be ejected from Kid's Motorcycle Fun Park no matter what your reason is)
- Ride in direction of riding area markings.
- No riding out of marked area.