

**RESOLUTION NO. 5847(13)**

**A Resolution of the Council of the City of Lompoc,  
County of Santa Barbara, State of California,  
for Application Directing Staff to Initiate Proceedings  
for the Summit View Homes Annexation (Annex No. 78)  
and Discussion with Santa Barbara County and the  
Local Agency Formation Commission**

**WHEREAS**, an application to annex the property was received in 2007; and

**WHEREAS**, the proposed annexation would be located along the northern boundary of the City, at the Intersection of Lompoc-Casmalia Road/Highway 1, H Street/Highway 1, and Purisima Road (Assessor Parcel Numbers: 97-250-034 and Planning Division File No. Annex No. 78); and

**WHEREAS**, the City Council directed the proposed annexation request to be considered as part of the 2030 General Plan; and

**WHEREAS**, the site was considered as Expansion Area D Environmental Impact Report, prepared for the 2030 General Plan Update; and

**WHEREAS**, in 2012, the City Council directed staff to proceed with an Environmental Impact Report (EIR) on the annexation, prior to adoption of the 2030 General Plan Update; and

**WHEREAS**, on April 20, 2012, the Planning Commission held a duly noticed public hearing and adopted Resolution No. 751(13), recommending the City Council direct staff to proceed with the annexation process through negotiation with Santa Barbara County and the Local Agency Formation Commission (LAFCO process); and

**WHEREAS**, the City Council held a duly noticed public hearing on May 21, 2013, to consider the request and the Planning Commission recommendation to proceed with the annexation request of the approximate 10-acre property located along the northern boundary of the City of Lompoc at the intersection of Lompoc-Casmalia Road/Highway 1, H Street/Highway 1, and Purisima Road; and

**WHEREAS**, the City Council has adopted Resolution No. 5846(13), certifying the Final Environmental Impact report – EIR 12-01 (SCH No. 2012071088) dated March 2013.

**NOW, THEREFORE, THE CITY COUNCIL OF THE CITY OF LOMPOC, CALIFORNIA DOES HEREBY RESOLVE AS FOLLOWS:**

**SECTION 1:** This proposal is made, and it is requested proceedings be taken, pursuant to the Cortese/Knox/Hertzberg Local Government Reorganization Act of 2000, commencing with Section 56000 of the California Government Code.

**SECTION 2:** This proposal is an annexation to the City of Lompoc and to the Mission Hills Community Services District and a detachment from the Santa Barbara County Fire Protection District.

**SECTION 3:** A map of the affected territory is set forth in Exhibit A, attached hereto and by reference incorporated herein.

**SECTION 4:** The reasons for the proposal are to:

- a. Develop the property with high-quality residential units that will assist in supporting a stable employment and retail customer base for the City.
- b. Provide supplementary funds for the maintenance and operation of needed public facilities for the property and for the City as a whole.
- c. Improve access to the property and transportation circulation in the Wye area.
- d. Provide for coordinated development policies for Summit View Homes that will result in a high-quality, aesthetically pleasing development pattern.
- e. Provide comprehensive environmental review of Summit View Homes to ensure that impacts that could result from development are considered and mitigated appropriately.
- f. Create employment opportunities in the construction trades over the period of project development.
- g. Provide the City review authority over the northern entrance into the City.
- h. Contribute toward the City achieving its fair share of housing units and affordable housing in the region.

**SECTION 5:** This Resolution is effective upon its adoption.

PASSED AND ADOPTED on May 21, 2013.

The foregoing Resolution was proposed by Councilmember \_\_\_\_\_, seconded by Councilmember \_\_\_\_\_, and duly passed and adopted by the City Council of the City of Lompoc at its regular meeting on May 21, 2013, by the following electronic vote:

AYE: Councilmember(s):


NO: Councilmember(s)

\_\_\_\_\_  
John H. Linn, Mayor  
City of Lompoc

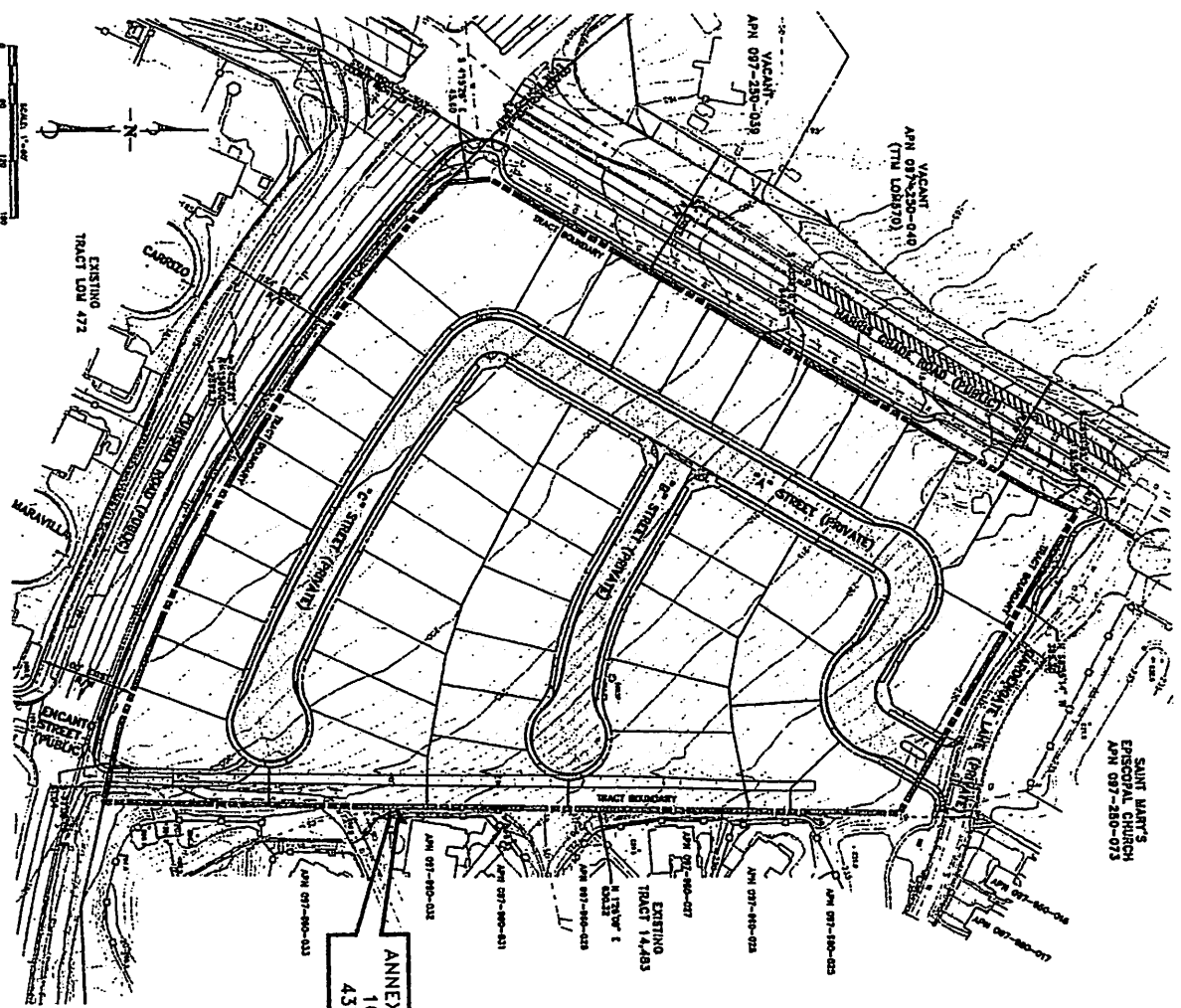
ATTEST:

\_\_\_\_\_  
Stacy Alvarez, City Clerk  
City of Lompoc

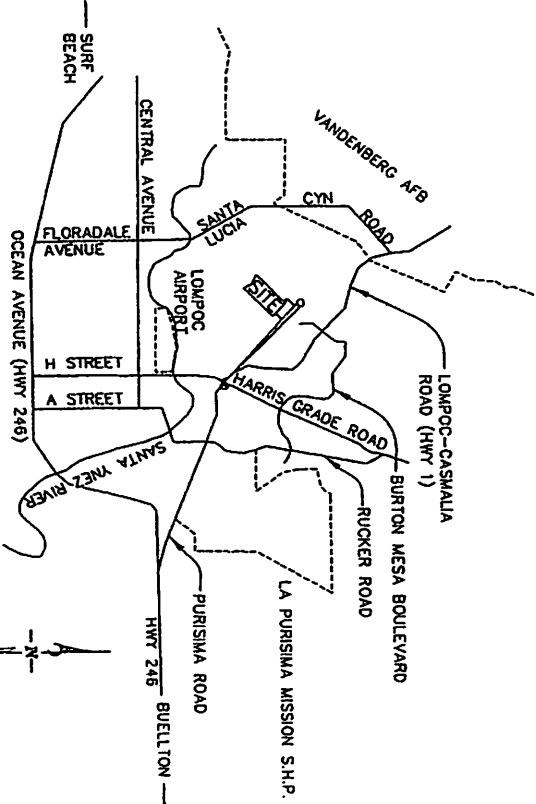
Attachment: Exhibit A – Proposed Annexation Map


 Portland & Smith  
 Civil Engineers  
 111 East Avenue, Suite 200  
 San Diego, CA 92101  
 Phone: (619) 594-0333  
 Fax: (619) 594-0331

FOR RECORD PLANS  
 ORDINANCE SCALE: 1"=60'



**ANNEXATION AREA**  
 10.05 AC  
 437,832 SF



**VICINITY MAP**  
 LEGEND  
 1" = 10 MILES  
 ANNEXATION AREA

SUMMIT VIEW HOMES  
 APN 097-250-034  
 PRELIMINARY ANNEXATION MAP  
 ANNEXATION NO. XX  
 TO THE CITY OF LOMPOC  
 NOVEMBER, 2011  
 SHEET 1 OF 1 SHEETS  
 SCALE 1" = 60'