

**Table ES- 2
 Summary of Environmental Impacts, Mitigation Measures, and Residual Impacts**

Impact	Mitigation Measures	Significance After Mitigation
<p>Impact N- 4. The proposed project would be exposed to noise generated by aircraft flying overhead. However, the project site is located outside of the 60 dBA CNEL noise contour for both the Lompoc Airport and VAFB. Therefore, impacts would be Class III, <i>less than significant</i>.</p>	<p>None required.</p>	<p>Less than significant without mitigation.</p>
<p><i>PUBLIC SERVICES AND UTILITIES</i></p>		
<p>Impact PSU- 1. The proposed project would introduce new development into areas <u>outside the Fire Department's five minute response zone</u>. However, upon annexation, the Lompoc Fire Department would be able to adequately serve the project site. In addition, the project would be required to comply with applicable Fire Code regulations and pay impact mitigation fees. Impacts would be Class III, <i>less than significant</i>.</p>	<p>None required.</p>	<p>Less than significant without mitigation.</p>
<p>Impact PSU- 2. The proposed project would incrementally increase demands on the Lompoc Police Department, which would further exacerbate existing service ratio deficiencies and could result in the need for expanded police services or facilities. However, payment of impact mitigation fees would reduce impacts to Class III, <i>less than significant</i>, levels.</p>	<p>None required.</p>	<p>Less than significant without mitigation.</p>
<p>Impact PSU- 3. The proposed project would incrementally increase demand on parkland such that the City would not meet its parkland to population ratio. However, payment of in- lieu fees would reduce potential impacts to a Class III, <i>less than significant</i>, level.</p>	<p>None required.</p>	<p>Less than significant without mitigation.</p>



4.10 PUBLIC SERVICES and UTILITIES

This section assesses potential impacts to public services and utilities, including fire and police protection, parks and recreation, schools, libraries, water supply, wastewater disposal and solid waste disposal, as well as electricity, natural gas, and telephone services. Stormwater control infrastructure and water quality impacts are addressed in Section 4.7, *Hydrology and Water Quality*.

4.10.1 Setting

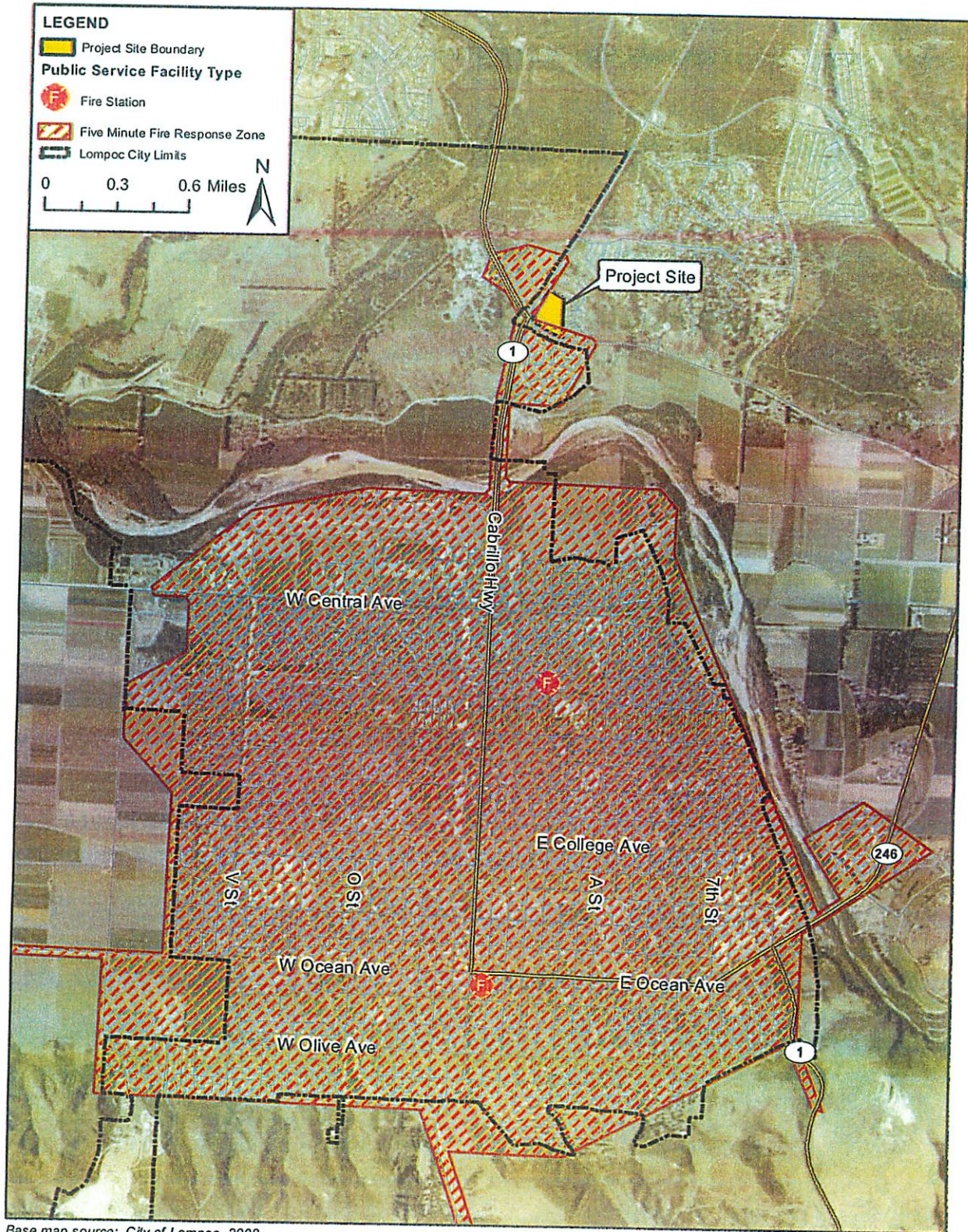
a. Fire Protection Services. Fire protection and emergency medical services in the City of Lompoc are provided by the Lompoc Fire Department. The Department operates two fire stations with eight budgeted firefighters and a minimum staffing of seven firefighters on duty between the two stations. Station #1, which is also the administrative headquarters, is located at 115 South G Street and houses three engines. Station #2 is located at 1100 North D Street and houses two engines. Figure 4.10-1 shows the locations of the fire stations within Lompoc. The entire Department's staffing consists of twenty-four (24) personnel (Personal Communication, Chief Stan Hart, Lompoc Fire Department, 2012).

Currently, the Lompoc Fire Department serves the 42,854 residents within the City (California Department of Finance, 2012). Based on the population of the City, the Fire Department service ratio is one firefighter for every 1,789 people, or 0.56 firefighters per 1,000 residents. The Lompoc Fire Department has a five-minute response time goal from dispatch 90% of the time (Hart, 2012). In the event that additional firefighter support is needed, the Lompoc Fire Department has a mutual aid agreement with the Santa Barbara County and Vandenberg Air Force Base Fire Departments and participates in the Statewide Mutual Aid agreement (Lompoc Fire Department "Training" website, 2012; Hart, 2012). The Santa Barbara County Fire Department has a fire station at 3510 Harris Grade Road, approximately two miles north of the project site.

All new development is required to pay fire impact mitigation fees (City of Lompoc Resolution 3795(89)). Any new development located outside of the five minute response zone, as shown on Figure 4.10-2, requires additional fire protection measures and consultation with the Fire Department (Hart, 2012). Impact mitigation fees are used to purchase new equipment and/or hire additional fire fighters. Property taxes also provide funding for Lompoc Fire Department personnel.

b. Police Protection Services. Law enforcement services within the City of Lompoc are provided by the Lompoc Police Department, located at 107 Civic Center Plaza. The Department has its own dispatch center and handles emergency (i.e., 911) telephone calls, non-emergency telephone calls, and dispatches police, fire, and ambulance service. Figure 4.10-1 shows the location of the Lompoc Police Station. The Department has 50 full-time sworn police officers,





Base map source: City of Lompoc, 2008.
City of Lompoc Fire Department, 2008.
Map images provided by ESRI and
its licensors, 2012.

5-Minute Fire Response
Zone

Figure 4.10-2
City of Lompoc



Fire Department

"Serving the community since 1926"

HEADQUARTERS

4410 Cathedral Oaks Road
Santa Barbara, CA 93110-1042
(805) 681-5500 FAX: (805) 681-5553

Michael W. Dyer
Fire Chief
County Fire Warden

Christian J. Hahn
Deputy Fire Chief

Letter 4

January 16, 2013

Lucille T. Breese, AICP
City of Lompoc Planning Division
100 Civic Center Plaza
Lompoc, CA 93436

Dear Ms. Breese,

This letter is Santa Barbara County Fire Department's response to the draft Environmental Impact Report for the Summit View Homes project. We are opposed to the detachment of the property from the Santa Barbara County Fire Protection District. Santa Barbara County Fire Station #51 is located at 3500 Harris Grade Road. The Draft EIR states that Fire Station #51 is "approximately two miles north of the project site"; the actual distance, however, is one mile. Our most conservative estimate (using Geographic Information System mapping) shows that Engine 51's emergency response time to the proposed development is at least three minutes faster than the closest Lompoc Fire Department engine. Future residents of the Summit View Homes project would be best served by the closest available emergency resource.

4.1

Sincerely,

A handwritten signature in black ink, appearing to read "Eric Peterson", with a long horizontal line extending to the right.

Eric Peterson
Fire Marshal
Santa Barbara County Fire Department

Letter 4

COMMENTER: Eric Peterson, Fire Marshal, Santa Barbara County Fire Department

DATE: January 16, 2013

RESPONSE:

Response 4.1

The commenter notes that County Fire Station #51 is one (1) mile from the project site, not two (2) miles as stated in the EIR. The commenter also noted that Station #51 would better serve the project due to its proximity. The second paragraph on page 4.10-1 in Section 4.10 *Public Services and Utilities* has been revised as follows:

The Santa Barbara County Fire Department has a fire station at 3510 Harris Grade Road, approximately two one miles north of the project site.

Regarding service to the project site, upon annexation the project site would be located within the City of Lompoc and therefore the Lompoc Fire Department would provide fire protection service to the project site. The primary Lompoc Fire Department station serving the project site is 1.8 miles away. As discussed under Impact PSU-1 in Section 4.10 *Public Services*, the Lompoc Fire Department has stated that the project site is well within their five (5) minute response zone and adequate fire protection services can be provided.

