



2050 General Plan

Kickoff Meeting
February 3, 2026

Introductions



Jim Harnish, JD
Project Advisor



Brent Gibbons, AICP
Project Director



Ryan Lester
Project Manager

Consultant Team

- **Mintier Harnish**
Planning consultant team responsible for updating the General Plan Elements and facilitating engagement, meetings, and hearings
- **Rincon Consultants and DKS**
Environmental Consultant Team responsible for all environmental analyses/CEQA analysis

A wide-angle photograph of a vast field of purple and white flowers, likely lavender and white flowers, stretching towards a horizon. In the background, there is a large red barn and a white fence. The sky is filled with soft, grey clouds, and the overall scene is bathed in a gentle, diffused light. The text 'Project Overview' is centered over the middle of the image in a dark red, serif font.

Project Overview

2050 General Plan

Phase 1: Adopted

- Housing Element
- Environmental Justice Element
- Safety Element

Phase 1: In progress

- Circulation Element

General Plan Elements	Required Elements	Optional Elements	Additional Notes
PHASE 1 Updates			
Housing Element 2023-2031	<input checked="" type="checkbox"/>		<i>Approved by City in 2024</i>
Environmental Justice	<input checked="" type="checkbox"/>		<i>Approved by City in 2024</i>
Safety Element	<input checked="" type="checkbox"/>		<i>Approved by City in 2025</i>
Circulation Element	<input checked="" type="checkbox"/>		In progress
PHASE 2 2050 Updates			
Land Use Element	<input checked="" type="checkbox"/>		<i>This Element will include Sphere adjustments and annexations</i>
Conservation and Open Space Element	<input checked="" type="checkbox"/>		
Noise Element	<input checked="" type="checkbox"/>		
Public Facilities Element		<input checked="" type="checkbox"/>	
Parks and Recreation Element		<input checked="" type="checkbox"/>	
Economic Development Element		<input checked="" type="checkbox"/>	<i>Based on prior Council discussion this Element can be consolidated into the Land Use Element.</i>
Urban Design Element		<input checked="" type="checkbox"/>	<i>Based on prior Council discussion this Element can be consolidated into the Land Use Element.</i>

2050 General Plan

Phase 2: Required Elements

- Land Use Element
- Conservation and Open Space Element
- Noise Element

General Plan Elements	Required Elements	Optional Elements	Additional Notes
PHASE 1 Updates			
Housing Element 2023-2031	<input checked="" type="checkbox"/>		<i>Approved by City in 2024</i>
Environmental Justice	<input checked="" type="checkbox"/>		<i>Approved by City in 2024</i>
Safety Element	<input checked="" type="checkbox"/>		<i>Approved by City in 2025</i>
Circulation Element	<input checked="" type="checkbox"/>		In progress
PHASE 2 2050 Updates			
Land Use Element	<input checked="" type="checkbox"/>		<i>This Element will include Sphere adjustments and annexations</i>
Conservation and Open Space Element	<input checked="" type="checkbox"/>		
Noise Element	<input checked="" type="checkbox"/>		
Public Facilities Element		<input checked="" type="checkbox"/>	
Parks and Recreation Element		<input checked="" type="checkbox"/>	
Economic Development Element		<input checked="" type="checkbox"/>	<i>Based on prior Council discussion this Element can be consolidated into the Land Use Element.</i>
Urban Design Element		<input checked="" type="checkbox"/>	<i>Based on prior Council discussion this Element can be consolidated into the Land Use Element.</i>

2050 General Plan

Phase 2: Optional Elements

- Public Facilities Element
- Parks and Recreation Element
- Economic Development Element
- Urban Design Element

General Plan Elements	Required Elements	Optional Elements	Additional Notes
PHASE 1 Updates			
Housing Element 2023-2031	<input checked="" type="checkbox"/>		<i>Approved by City in 2024</i>
Environmental Justice	<input checked="" type="checkbox"/>		<i>Approved by City in 2024</i>
Safety Element	<input checked="" type="checkbox"/>		<i>Approved by City in 2025</i>
Circulation Element	<input checked="" type="checkbox"/>		In progress
PHASE 2 2050 Updates			
Land Use Element	<input checked="" type="checkbox"/>		<i>This Element will include Sphere adjustments and annexations</i>
Conservation and Open Space Element	<input checked="" type="checkbox"/>		
Noise Element	<input checked="" type="checkbox"/>		
Public Facilities Element		<input checked="" type="checkbox"/>	
Parks and Recreation Element		<input checked="" type="checkbox"/>	
Economic Development Element		<input checked="" type="checkbox"/>	<i>Based on prior Council discussion this Element can be consolidated into the Land Use Element.</i>
Urban Design Element		<input checked="" type="checkbox"/>	<i>Based on prior Council discussion this Element can be consolidated into the Land Use Element.</i>

2050 General Plan

Council Direction – Less is more

- The existing general plan covers too many optional topics and subtopics
- Existing Elements haven't been as successful due to wide scope/overly-prescriptive approach
- Narrowing is needed to remove constraints

General Plan Elements	Required Elements	Optional Elements	Additional Notes
PHASE 1 Updates			
Housing Element 2023-2031	<input checked="" type="checkbox"/>		<i>Approved by City in 2024</i>
Environmental Justice	<input checked="" type="checkbox"/>		<i>Approved by City in 2024</i>
Safety Element	<input checked="" type="checkbox"/>		<i>Approved by City in 2025</i>
Circulation Element	<input checked="" type="checkbox"/>		In progress
PHASE 2 2050 Updates			
Land Use Element	<input checked="" type="checkbox"/>		<i>This Element will include Sphere adjustments and annexations</i>
Conservation and Open Space Element	<input checked="" type="checkbox"/>		
Noise Element	<input checked="" type="checkbox"/>		
Public Facilities Element		<input checked="" type="checkbox"/>	
Parks and Recreation Element		<input checked="" type="checkbox"/>	
Economic Development Element		<input checked="" type="checkbox"/>	<i>Based on prior Council discussion this Element can be consolidated into the Land Use Element.</i>
Urban Design Element		<input checked="" type="checkbox"/>	<i>Based on prior Council discussion this Element can be consolidated into the Land Use Element.</i>

2050 General Plan

Council Direction - Consolidate

- Consolidate contents from Economic Development into Land Use Element
- Urban Design may not be needed, particularly now that the City has adopted objective design standards

General Plan Elements	Required Elements	Optional Elements	Additional Notes
PHASE 1 Updates			
Housing Element 2023-2031	<input checked="" type="checkbox"/>		Approved by City in 2024
Environmental Justice	<input checked="" type="checkbox"/>		Approved by City in 2024
Safety Element	<input checked="" type="checkbox"/>		Approved by City in 2025
Circulation Element	<input checked="" type="checkbox"/>		In progress
PHASE 2 2050 Updates			
Land Use Element	<input checked="" type="checkbox"/>		This Element will include Sphere adjustments and annexations
Conservation and Open Space Element	<input checked="" type="checkbox"/>		
Noise Element	<input checked="" type="checkbox"/>		
Public Facilities Element		<input checked="" type="checkbox"/>	
Parks and Recreation Element		<input checked="" type="checkbox"/>	
Economic Development Element		<input checked="" type="checkbox"/>	Based on prior Council discussion this Element can be consolidated into the Land Use Element.
Urban Design Element		<input checked="" type="checkbox"/>	Based on prior Council discussion this Element can be consolidated into the Land Use Element.

2050 General Plan

Council Direction - Remove optional content

- Delete, consolidate, or narrow the scope of Public Facilities and Parks and Recreation Elements
- Necessary policies can be consolidated into Land Use or Conservation and Open Space
- Remove optional content to the extent possible

General Plan Elements	Required Elements	Optional Elements	Additional Notes
PHASE 1 Updates			
Housing Element 2023-2031	<input checked="" type="checkbox"/>		<i>Approved by City in 2024</i>
Environmental Justice	<input checked="" type="checkbox"/>		<i>Approved by City in 2024</i>
Safety Element	<input checked="" type="checkbox"/>		<i>Approved by City in 2025</i>
Circulation Element	<input checked="" type="checkbox"/>		In progress
PHASE 2 2050 Updates			
Land Use Element	<input checked="" type="checkbox"/>		<i>This Element will include Sphere adjustments and annexations</i>
Conservation and Open Space Element	<input checked="" type="checkbox"/>		
Noise Element	<input checked="" type="checkbox"/>		
Public Facilities Element		<input checked="" type="checkbox"/>	
Parks and Recreation Element		<input checked="" type="checkbox"/>	
Economic Development Element		<input checked="" type="checkbox"/>	<i>Based on prior Council discussion this Element can be consolidated into the Land Use Element.</i>
Urban Design Element		<input checked="" type="checkbox"/>	<i>Based on prior Council discussion this Element can be consolidated into the Land Use Element.</i>

2050 General Plan

Council Direction – Address Constraints

- Identify and remove policies that constrain development
- Updated Elements should be are concise, feasible, easy to implement
- Do not include policy language that creates obstacles or higher costs for developers
- Land Use and EIR should consider potential annexations and SOI adjustments to facilitate annexation

Focus for the 2050 General Plan Update

- Incorporate AdHoc Committee changes
- Anticipate RHNA numbers for 2031 and 2041
- Infill properties development potential with GP Updates and Rezonings
- Sphere of Influence Adjustments, Prezonings, and Annexations
- New EIR for 2050 General Plan

Focus for the 2050 General Plan Update

Ensure Consistency with:

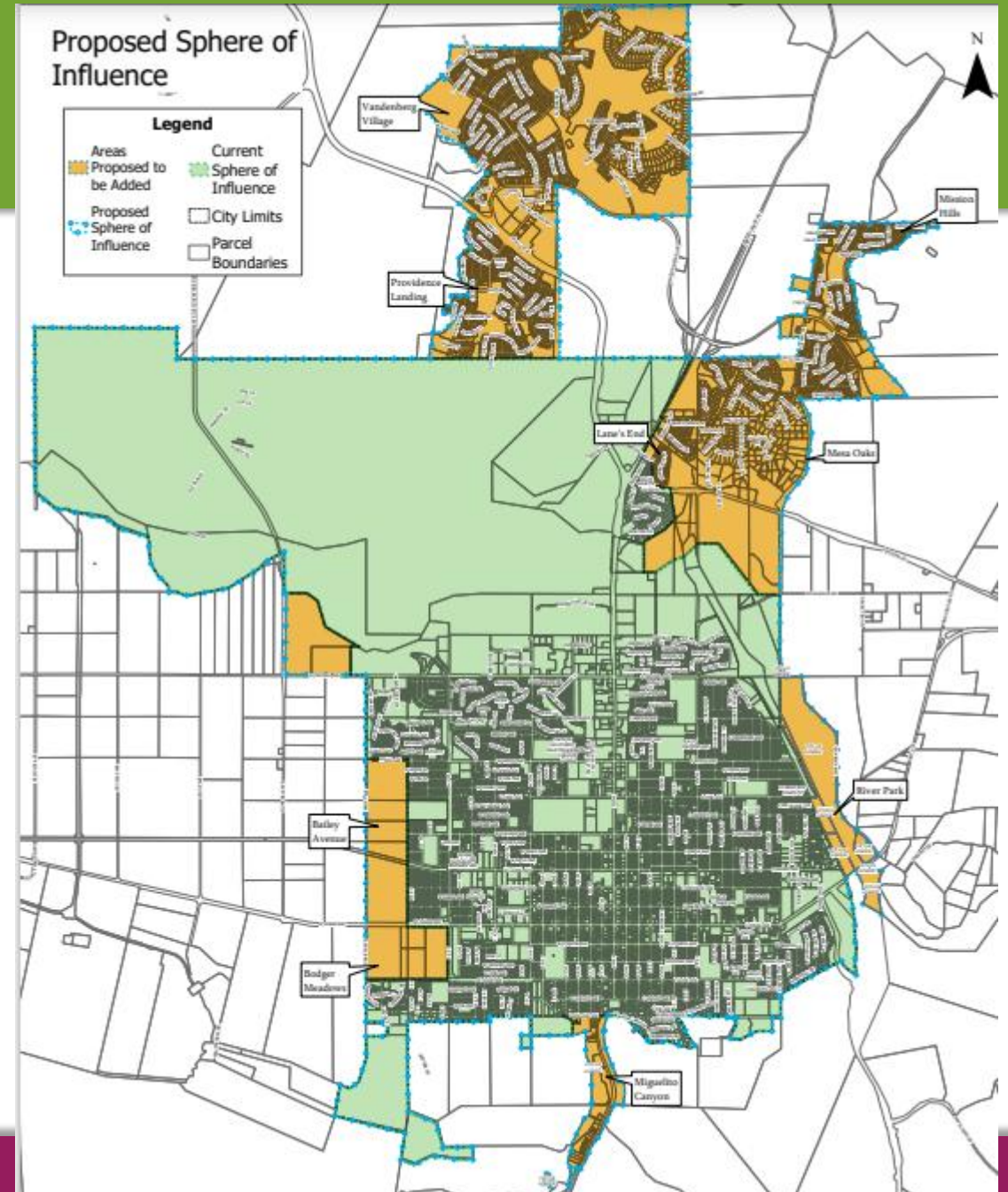
- SBCAG growth projections
- The SBCAG RTP/SCS
- The City's ongoing MSR
- Identified LAFCo policies

In order to:

- Align proposed Sphere of Influence adjustments and annexations
- Analyze annexations and SOI adjustments in General Plan Update and Environmental Impact Report

Sphere of Influence Review

This map illustrates the areas being considered for the review of future Sphere of Influence for the City of Lompoc.



A wide-angle photograph of a vast field of purple and white flowers, likely a lavender or similar crop, stretching towards a horizon. In the background, a large, light-colored barn with a dark roof is visible, along with some trees and a utility pole. The sky is filled with soft, grey clouds, suggesting an overcast day. The overall scene is rural and peaceful.

Engagement Strategy

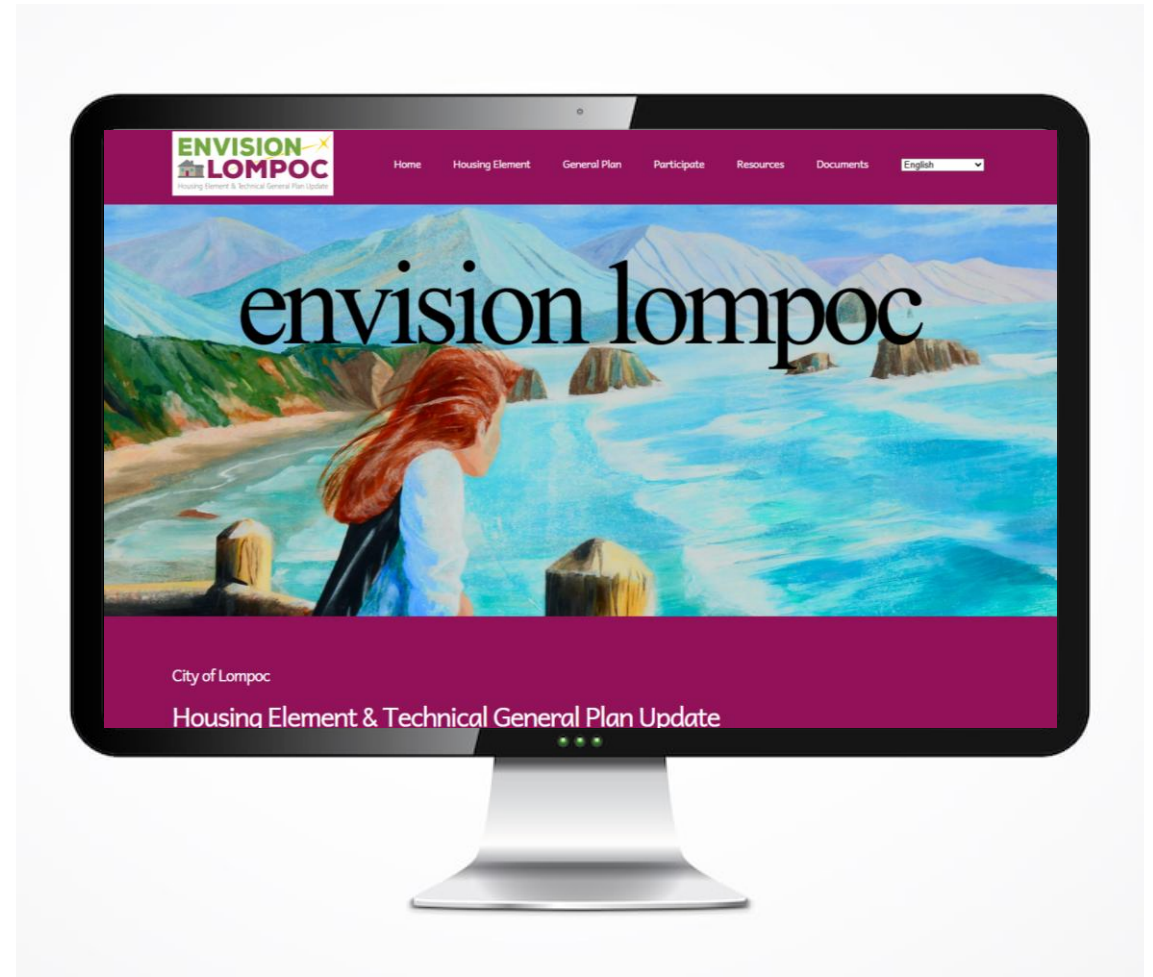
Engagement Strategy

- **BRANDING & PROJECT LOGO**
- PROJECT WEBSITE
- EMAIL BLASTS
- WORKSHOPS
- STUDY SESSIONS AND HEARINGS



Engagement Strategy

- BRANDING & PROJECT LOGO
- **PROJECT WEBSITE**
- EMAIL BLASTS
- WORKSHOPS
- STUDY SESSIONS AND HEARINGS



Engagement Strategy

- BRANDING & PROJECT LOGO
- PROJECT WEBSITE
- **EMAIL BLASTS**
- WORKSHOPS
- STUDY SESSIONS AND HEARINGS



Revised Adopted Housing Element Available Now!



The City of Lompoc presented its Adopted Housing Element to the California Department of Housing and Community Development (HCD) for 60-day review on November 21, 2023. On January 29, 2024, the City received a comment letter from HCD indicating the remaining revisions needed to achieve certification and full compliance with State law.

Through spring and early summer 2024, the City worked with HCD to address each remaining comment. During this process the City received informal comments from HCD in writing in April, and again in May, as well as additional comments via Zoom conference call in June.

The Revised Adopted Housing Element, showing changes based on these reviews, is now available for public review and comment. Please use the buttons below to download the Revised Adopted Housing Element and HCD comments.

[Download the Revised Adopted Housing Element](#)

[Download HCD's Comment Letter on the Adopted Housing Element](#)

[Download HCD's Informal Comments, Received April 2024](#)

[Download HCD's Informal Comments, Received May 2024](#)

Engagement Strategy

- BRANDING & PROJECT LOGO
- PROJECT WEBSITE
- EMAIL BLASTS
- **WORKSHOPS**
- STUDY SESSIONS AND HEARINGS

Community Open House Workshops:
#1: Existing Conditions and Visioning
#2: Land Use Alternatives
#3: Draft 2050 General Plan



Engagement Strategy

- BRANDING & PROJECT LOGO
- PROJECT WEBSITE
- EMAIL BLASTS
- WORKSHOPS
- **STUDY SESSIONS AND HEARINGS**

- All Hands Kick-off City Council Study Session (today)
- City Council and Planning Commission Special Meeting Session: Assets, Issues, Opportunities and Vision and Guiding Principles
- Planning Commission Study Session: Alternatives
- City Council Study Session: Alternatives
- City Council and Planning Commission Joint Study Session: Draft 2050 General Plan
- Planning Commission and City Council Hearings



Deliverables and Schedule

Deliverables

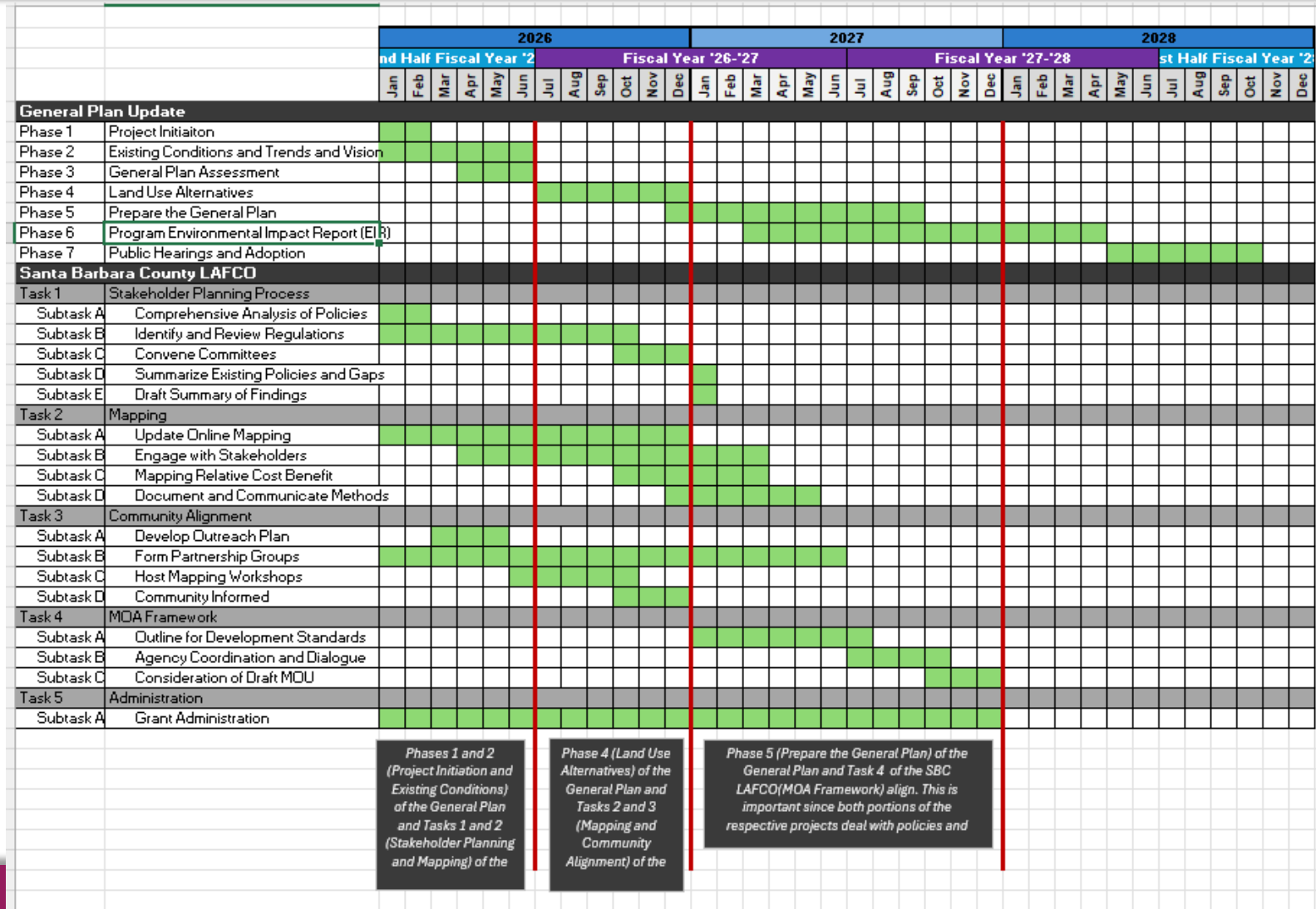
Project Documents

- Draft Background Report
- Draft Assets, Issues, Opportunities, and Vision and Guiding Principles Report
- Draft Alternatives Report
- Draft 2050 General Plan
- Draft Program EIR
- Draft and Final Response to Comments on the EIR
- Mitigation Monitoring and Reporting Program
- Final 2050 General Plan and EIR documents
- All meeting and workshop materials

2050 General Plan Timeline

	2026												2027												2028											
	JAN	FEB	MAR	APR	MAY	JUN	JUL	AUG	SEPT	OCT	NOV	DEC	JAN	FEB	MAR	APR	MAY	JUN	JUL	AUG	SEPT	OCT	NOV	DEC	JAN	FEB	MAR	APR	MAY	JUN	JUL	AUG	SEPT	OCT	NOV	DEC
1. Project Initiation	█																																			
2. Existing Conditions and Trends and Vision	█	█	█	█	█																															
3. General Plan Assessment				█	█	█																														
4. Land Use Alternatives							█	█	█	█	█	█																								
5. Prepare the General Plan													█	█	█	█	█	█	█	█	█	█														
6. Program Environmental Impact Report														█	█	█	█	█	█	█	█	█	█	█												
7. Public Hearings and Adoption																																				

2050 GP Timeline with SALC Grant Timeline



A wide-angle photograph of a vast field of purple and white flowers, likely a lavender or similar crop, stretching towards a horizon. In the background, a large, light-colored barn with a dark roof is visible, along with some trees and a utility pole. The sky is filled with soft, grey clouds, suggesting an overcast day. The overall scene is rural and peaceful.

Questions & Discussion

Discussion

1. When the 2050 General Plan is complete, what would make you feel the process was a successful effort?
2. Are there any additional key challenges in Lompoc that you feel the General Plan should address?
3. What are additional key opportunities in Lompoc that the General Plan should enhance or protect?