



# 2050 General Plan

Update

April 21, 2026

# Update

- February 3, 2026 City Council Kick Off Meeting with MintierHarnish
- April 27, 2026 Trends and Background Draft Report
- April 27-28, 2026 Community Meetings
  - Library 2:00 to 4:00
  - City Hall 6:00 to 8:30
  - Ryan Park 8:00 to 10:00
  - Meetings with LUSD and AHC

A wide-angle photograph of a vast field of purple and white flowers, likely lavender and white flowers, stretching towards a horizon. In the background, there is a large red barn and a house with white trim. The sky is filled with soft, grey clouds, and the overall scene is bathed in a gentle, diffused light. The text 'Project Overview' is centered over the middle of the image in a dark red, serif font.

# Project Overview

# 2050 General Plan

## Council Direction – Less is more

- The existing general plan covers too many optional topics and subtopics
- Existing Elements haven't been as successful due to wide scope/overly-prescriptive approach
- Narrowing is needed to remove constraints

General Plan Elements	Required Elements	Optional Elements	Additional Notes
<b>PHASE 1 Updates</b>			
Housing Element 2023-2031	<input checked="" type="checkbox"/>		<i>Approved by City in 2024</i>
Environmental Justice	<input checked="" type="checkbox"/>		<i>Approved by City in 2024</i>
Safety Element	<input checked="" type="checkbox"/>		<i>Approved by City in 2025</i>
Circulation Element	<input checked="" type="checkbox"/>		In progress
<b>PHASE 2 2050 Updates</b>			
Land Use Element	<input checked="" type="checkbox"/>		<i>This Element will include Sphere adjustments and annexations</i>
Conservation and Open Space Element	<input checked="" type="checkbox"/>		
Noise Element	<input checked="" type="checkbox"/>		
Public Facilities Element		<input checked="" type="checkbox"/>	
Parks and Recreation Element		<input checked="" type="checkbox"/>	
Economic Development Element		<input checked="" type="checkbox"/>	<i>Based on prior Council discussion this Element can be consolidated into the Land Use Element.</i>
Urban Design Element		<input checked="" type="checkbox"/>	<i>Based on prior Council discussion this Element can be consolidated into the Land Use Element.</i>

# 2050 General Plan

## **Council Direction – Address Constraints**

- Identify and remove policies that constrain development
- Updated Elements should be are concise, feasible, easy to implement
- Do not include policy language that creates obstacles or higher costs for developers
- Land Use and EIR should consider potential annexations and SOI adjustments to facilitate annexation

# Focus for the 2050 General Plan Update

- Incorporate AdHoc Committee changes
- Anticipate RHNA numbers for 2031 and 2041
- Infill properties development potential with GP Updates and Rezonings
- Sphere of Influence Adjustments, Prezonings, and Annexations
- New EIR for 2050 General Plan

# Focus for the 2050 General Plan Update

## **Ensure Consistency with:**

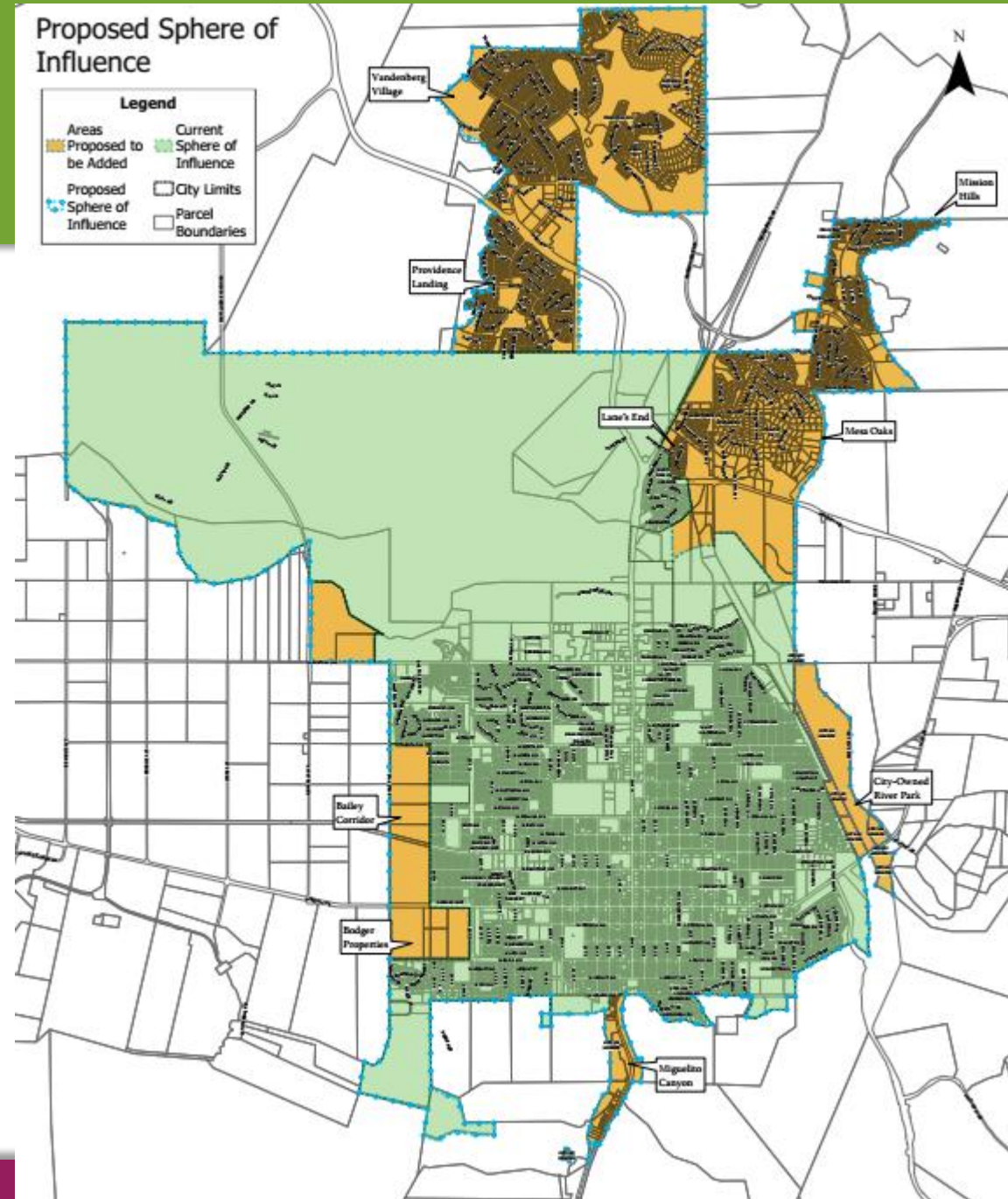
- SBCAG growth projections
- The SBCAG RTP/SCS
- The City's ongoing MSR
- Identified LAFCo policies

## **In order to:**

- Align proposed Sphere of Influence adjustments and annexations
- Analyze annexations and SOI adjustments in General Plan Update and Environmental Impact Report

# Sphere of Influence Review

This map illustrates the areas being considered for the review of future Sphere of Influence for the City of Lompoc.



A wide-angle photograph of a vast field of purple and white flowers, likely a lavender or similar crop, stretching towards a horizon. In the background, a large, reddish-brown barn with a white roof is visible, along with other smaller buildings and trees. The sky is filled with soft, grey clouds, suggesting an overcast day. The overall scene is rural and peaceful.

# Engagement Strategy

# Engagement Strategy

- **BRANDING & PROJECT LOGO**
- PROJECT WEBSITE
- EMAIL BLASTS
- WORKSHOPS
- STUDY SESSIONS AND HEARINGS



**ENVISION** ✨  
**LOMPOC**  
**2050 GENERAL PLAN**

# Engagement Strategy

- BRANDING & PROJECT LOGO

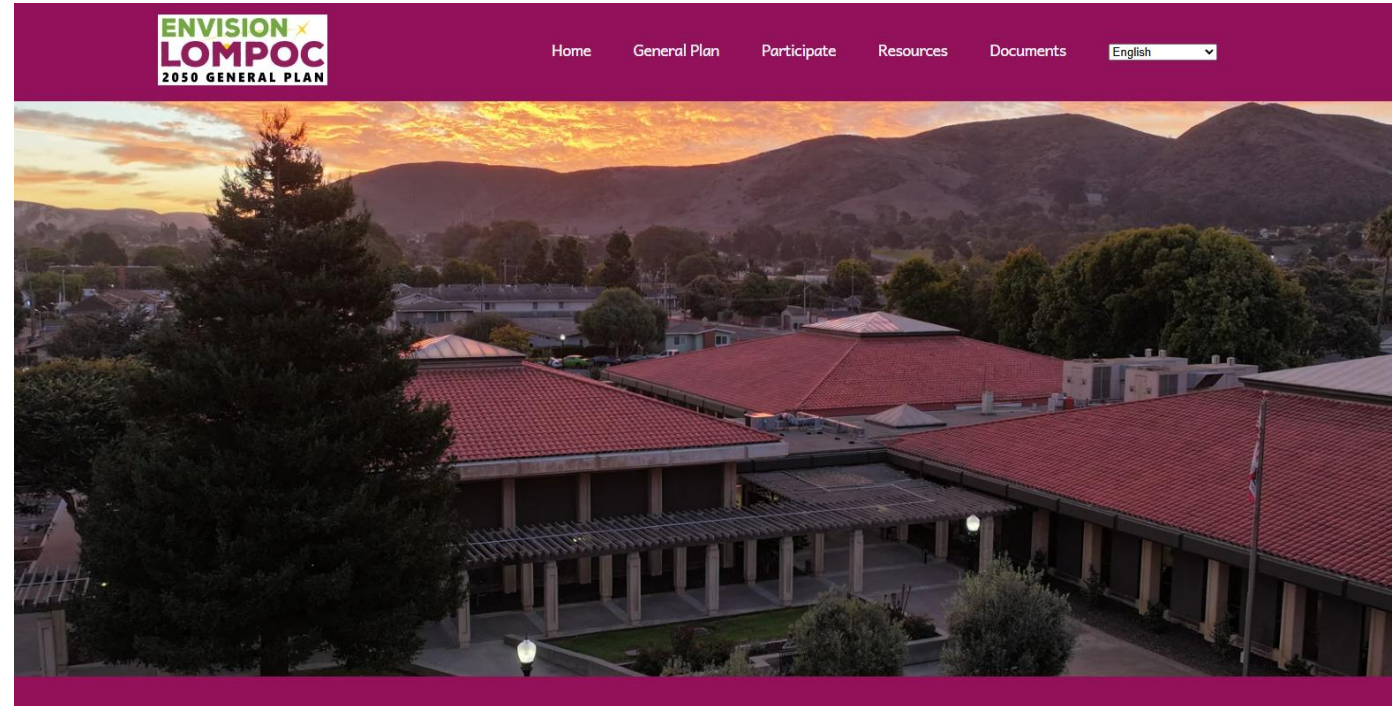
- PROJECT WEBSITE

<https://envisionlompop.com>

- EMAIL BLASTS

- WORKSHOPS

- STUDY SESSIONS AND HEARINGS



# Engagement Strategy

- BRANDING & PROJECT LOGO
- PROJECT WEBSITE
- **EMAIL BLASTS**
- WORKSHOPS
- STUDY SESSIONS AND HEARINGS

**ENVISION**  
**LOMPOC**  
2050 GENERAL PLAN



## **SAVE THE DATE!**

### **City of Lompoc 2050 General Plan Community Workshop #1**

**Monday, April 27, 2026 | 6:30 p.m. to 8:30 p.m.**

**City Council Chambers**

**100 Civic Center Plaza, Lompoc, CA 93436**

On Monday, April 27, 2026, the City of Lompoc will be holding the first community workshop for Phase 2 of the General Plan update. The purpose of the workshop will be to provide an overview of the Project, summarize findings from the Draft Background Report and receive public input on major issues and opportunities facing the city.

The workshop will be held in an open house format, allowing participants to drop in at their convenience. Participants will have the opportunity to offer public comments and provide information on what they love about Lompoc, what could be improved, and what they envision for the city's future. The workshop will be open from 6:30 p.m. to 8:30 p.m. in City Council Chambers.

**Please join us!**

# Engagement Strategy

- BRANDING & PROJECT LOGO
- PROJECT WEBSITE
- EMAIL BLASTS
- **WORKSHOPS**
- STUDY SESSIONS AND HEARINGS

**Community Open House Workshops:**  
#1: Existing Conditions and Visioning  
#2: Land Use Alternatives  
#3: Draft 2050 General Plan



# Engagement Strategy

- BRANDING & PROJECT LOGO

- PROJECT WEBSITE

- EMAIL BLASTS

- WORKSHOPS

- **STUDY SESSIONS AND HEARINGS**

- All Hands Kick-off City Council Study Session **2-3-2026**
- Quarterly CC Progress Report **4-21-2026**
- City Council and Planning Commission Special Meeting Session: Assets, Issues, Opportunities and Vision and Guiding Principles **6-2026**
- Planning Commission Study Session: Alternatives
- City Council Study Session: Alternatives
- City Council and Planning Commission Joint Study Session: Draft 2050 General Plan
- Planning Commission and City Council Hearings



# Deliverables and Schedule

# Deliverables

## **Project Documents**

- Draft Background Report **April 2026 (Ahead of Schedule)**
- Draft Assets, Issues, Opportunities, and Vision and Guiding Principles Report
- Draft Alternatives Report
- Draft 2050 General Plan
- Draft Program EIR
- Draft and Final Response to Comments on the EIR
- Mitigation Monitoring and Reporting Program
- Final 2050 General Plan and EIR documents
- All meeting and workshop materials

# 2050 General Plan Timeline

	2026												2027												2028											
	JAN	FEB	MAR	APR	MAY	JUN	JUL	AUG	SEPT	OCT	NOV	DEC	JAN	FEB	MAR	APR	MAY	JUN	JUL	AUG	SEPT	OCT	NOV	DEC	JAN	FEB	MAR	APR	MAY	JUN	JUL	AUG	SEPT	OCT	NOV	DEC
<b>1. Project Initiation</b>	█																																			
<b>2. Existing Conditions and Trends and Vision</b>	█	█	█	█	█																															
<b>3. General Plan Assessment</b>				█	█	█																														
<b>4. Land Use Alternatives</b>							█	█	█	█	█	█																								
<b>5. Prepare the General Plan</b>													█	█	█	█	█	█	█	█	█	█														
<b>6. Program Environmental Impact Report</b>														█	█	█	█	█	█	█	█	█	█	█												
<b>7. Public Hearings and Adoption</b>																													█	█	█	█	█	█		

A wide-angle photograph of a vast field of purple and white flowers, likely lavender and white flowers, stretching towards a horizon. In the background, there is a large red barn with a white roof, a utility pole, and some trees. The sky is filled with soft, grey clouds, suggesting an overcast day. The overall scene is peaceful and rural.

# Questions & Discussion